

A modern office lounge with a long, light-colored upholstered sofa and a wooden bar counter. Several large, dark, pleated acoustic panels hang from the ceiling. A man is sitting on the sofa, and a woman is standing nearby. The room has large windows overlooking a city skyline. The floor is made of light-colored wood. The text "THINK ACOUSTIC" is overlaid in large white letters.

THINK ACOUSTIC



Photo credit: Eric Laignel
HBO Headquarters, Seattle, USA

**Anyone who has worked in
an open office space knows
ambient sounds become a source
of distraction and stress.**

**Eureka has developed a stunning
range of sound-absorbing products
designed to minimize noise while
providing an impactful aesthetic.**

**Tone down the noise.
Turn on the light.**



Warm and delicate, this large surface sconce features front and back light giving a nicely toned atmosphere to interior spaces. Made from formed recycled acoustical PET felt, the shape evokes the effect of rippling water.



OSLO



OSLO



OSLO



MATRIX

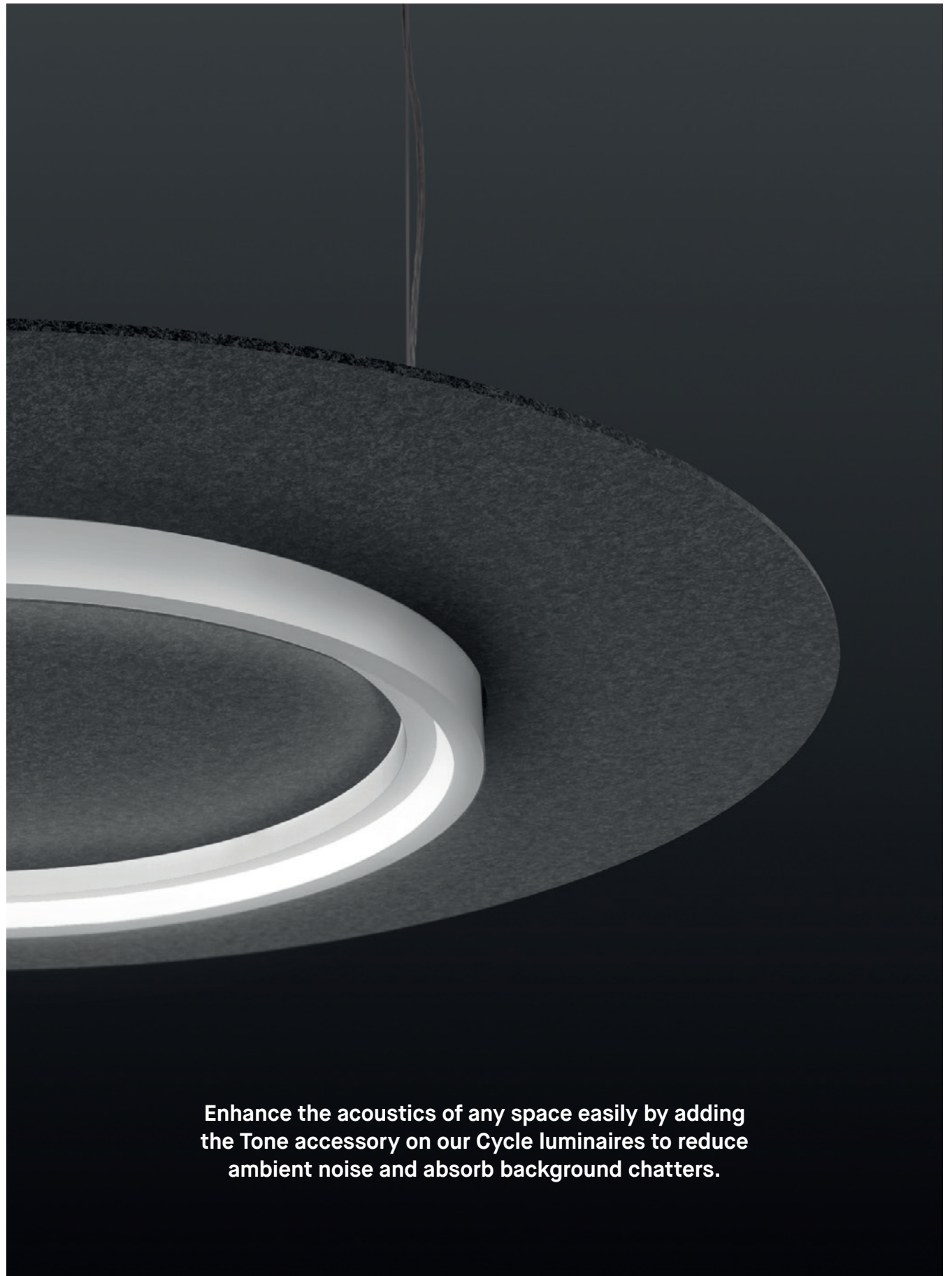
An impressive example of modularity and flexibility, this sound absorbing mural system allows the creation of a colorful mosaic, punctuated with OLED light sources. The luminous modules are movable and can playfully be rearranged on the spot with the use of its simple and intuitive magnetic connection.



MATRIX



MATRIX



Enhance the acoustics of any space easily by adding the Tone accessory on our Cycle luminaires to reduce ambient noise and absorb background chatters.



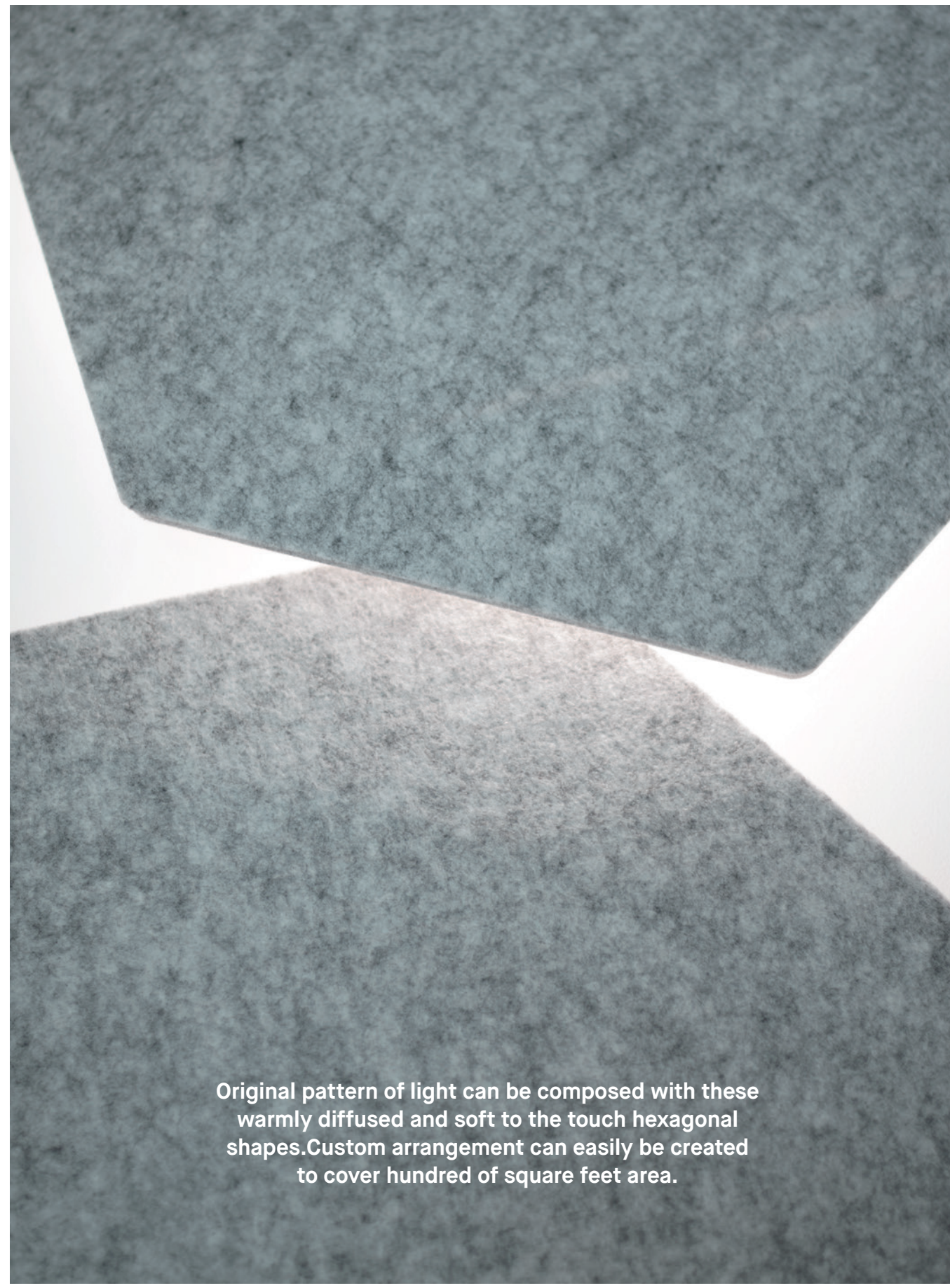
TONE



TONE



TONE



NODE

Original pattern of light can be composed with these warmly diffused and soft to the touch hexagonal shapes. Custom arrangement can easily be created to cover hundred of square feet area.



NODE

Photo credit : © 2018 Kevin C. Korczyk
RC Lurie Headquarters, Phoenix, AZ, USA



NODE



NODE



This soft and colorful pendant is composed of twelve felt acoustic panels to illuminate and decorate your space with the added benefit of sound absorption.

MUTE



MUTE

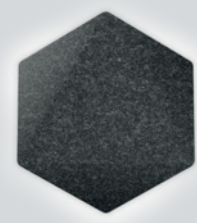


MUTE



MUTE

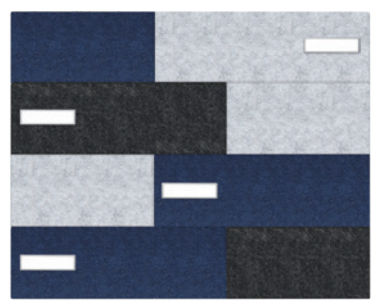
Photo credit: Eric Laignel
HBO Headquarters, Seattle, WA, USA



NODE

3446

Custom patterns can cover hundreds of ft² area



MATRIX

3525

Custom patterns can cover hundreds of ft² area



MUTE

4258

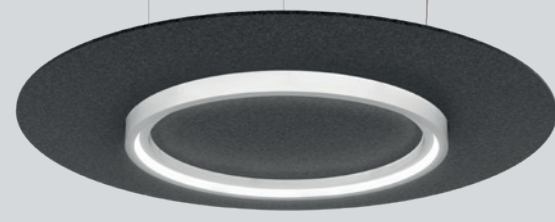
ø16" — ø32"



OSLO

3038 - 4238

ø19" — ø29"



TONE

2990

Cycle accessory / ø18" — ø95"



Finishes

- | | | |
|-------------|-----|--|
| Charcoal | CHF | |
| Silver gray | SGF | |
| Navy blue | NBF | |
| Beige | BGF | |
| Light beige | LBF | |
| Red | REF | |
| Cold colors | CCF | |
| Warm colors | WCF | |

