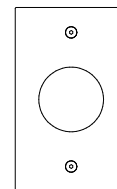
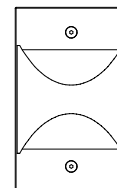


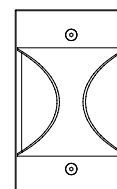
10093



10094



10095



10095B

INSTALLATION

- 1 - INSTALLATION ON JUNCTION BOX
INSTALL STANDARD SWITCH JUNCTION BOX 2 X 3 (SUPPLIED BY OTHERS), AND MAKE ALL WIRING CONNECTION.
- 2 - PLACE FIXTURE ASSEMBLY [A] WITH GASKET AGAINST THE WALL.
- 3 - TIGHTEN FIXTURE WITH 2-WAY #6-32 X 1" L [B] SUPPLIED ALLEN HEAD SCREW, BY USING ALLEN KEY 2 MM [C] AS SHOWN (SUPPLIED BY OTHERS)

INSTALLATION

- 1 - INSTALLATION BOÎTE ÉLECTRIQUE
INSTALLER LA BOÎTE DE JONCTION D'INTERRUPTEUR STANDARD 2 X 3 (NON-INCLUSE) ET FAIRE LA CONNEXION DES FILS.
- 2 - POSER L'ENCASTRÉ MURAL [A] FOURNI AVEC JOINT D'ÉTANCHÉITÉ CONTRE LE MUR.
- 3 - SERRER L'ENSEMBLE DU LUMINAIRE EN UTILISANT DES (2) VIS #6-32 X 1" L ALLEN [B] FOURNIES AVEC L'ENCASTRÉ, A L'AIDE D'UNE CLEF ALLEN 2MM [C] CI-ILLUSTRÉE (NON-INCLUSE).