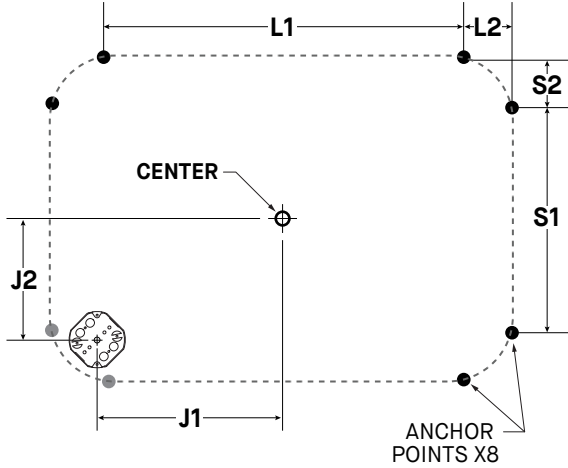


**MOUNTING POINTS REFERENCE**  
**/RÉFÉRENCE DE POINTS D'ANCRAGE**

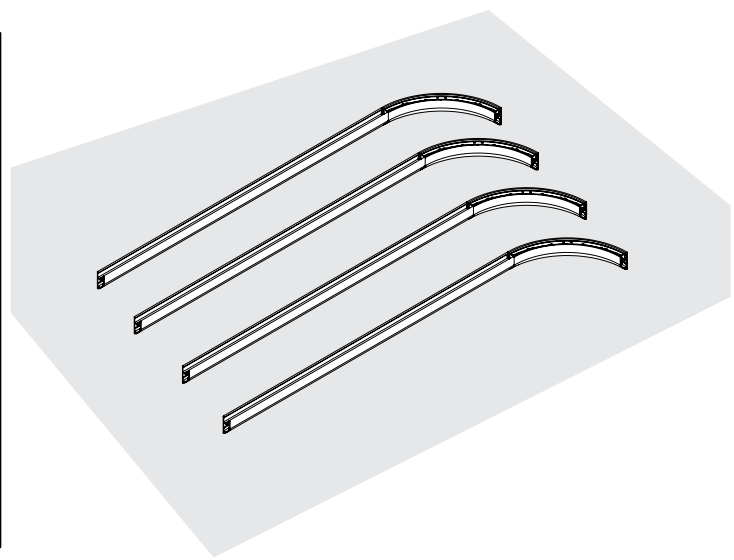
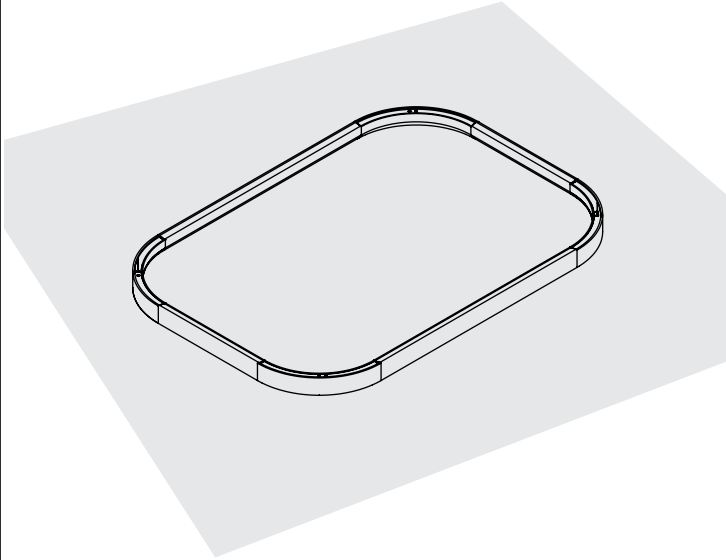


MODEL+WEIGHT	J1	J2	L1	L2	S1	S2
<b>3852-44x44</b> (7.4kg / 16.2lbs)	400mm 15-3/4"	400mm 15-3/4"	648mm 25-1/2"		648mm 25-1/2"	
<b>3852-44x62</b> (9.1kg - 20lbs)	640mm 25-3/16"	400mm 15-3/4"	1127mm 44-3/8"		648mm 25-1/2"	
<b>3852-44x82</b> (23.8kg - 23.8lbs)	880mm 34-5/8"	400mm 15-3/4"	1608mm 63-5/16"		648mm 25-1/2"	
<b>3852-44x100</b> (12.5kg - 27.6lbs)	1120mm 44-1/8"	400mm 15-3/4"	2088mm 82-3/16"		648mm 25-1/2"	
<b>3852-44x120</b> (14.3kg - 31.4lbs)	1361mm 53-9/16"	400mm 15-3/4"	2569mm 101-1/8"		648mm 25-1/2"	
<b>3852-62x62</b> (10.8kg - 23.8lbs)	640mm 25-3/16"	640mm 25-3/16"	1127mm 44-3/8"		1127mm 44-3/8"	
<b>3852-62x82</b> (12.5kg - 27.6lbs)	880mm 34-5/8"	640mm 25-3/16"	1608mm 63-5/16"		1127mm 44-3/8"	
<b>3852-62x100</b> (14.3kg - 31.4lbs)	1120mm 44-1/8"	640mm 25-3/16"	2088mm 82-3/16"	195mm 7-11/16"	1127mm 44-3/8"	195mm 7-11/16"
<b>3852-62x120</b> (16kg - 35.2lbs)	1361mm 53-9/16"	640mm 25-3/16"	2569mm 101-1/8"		1127mm 44-3/8"	
<b>3852-82x82</b> (14.3kg - 31.4lbs)	880mm 34-5/8"	880mm 34-5/8"	1608mm 63-5/16"		1608mm 63-5/16"	
<b>3852-82x100</b> (16kg - 35.2lbs)	1120mm 44-1/8"	880mm 34-5/8"	2088mm 82-3/16"		1608mm 63-5/16"	
<b>3852-82x120</b> (17.7kg - 39lbs)	1361mm 53-9/16"	880mm 34-5/8"	2569mm 101-1/8"		1608mm 63-5/16"	
<b>3852-100x100</b> (17.7kg - 39lbs)	1120mm 44-1/8"	1120mm 44-1/8"	2088mm 82-3/16"		2088mm 82-3/16"	
<b>3852-100x120</b> (19.5kg - 42.8lbs)	1361mm 53-9/16"	1120mm 44-1/8"	2569mm 101-1/8"		2088mm 82-3/16"	
<b>3852-120x120</b> (21.2kg - 46.6lbs)	1361mm 53-9/16"	1361mm 53-9/16"	2569mm 101-1/8"		2569mm 101-1/8"	

**1 STATE OF FIXTURE**  
**/ÉTAT DE LA FIXTURE**

**IF FIXTURE IS ALREADY ASSEMBLED → SKIP TO STEP 6**  
**SI FIXTURE DÉJÀ ASSEMBLÉE → SAUTER À L'ÉTAPE 6**

**IF FIXTURE IS DISASSEMBLED → CONTINUE TO STEP 2**  
**SI FIXTURE EST DÉASSEMBLÉE → CONTINUER À L'ÉTAPE 2**



**INSTALLATION**

1- DEPENDING ON THE SIZE OF THE FIXTURE, IT IS POSSIBLE THAT IT IS ALREADY ASSEMBLED. IN THIS CASE, SKIP TO STEP 6.

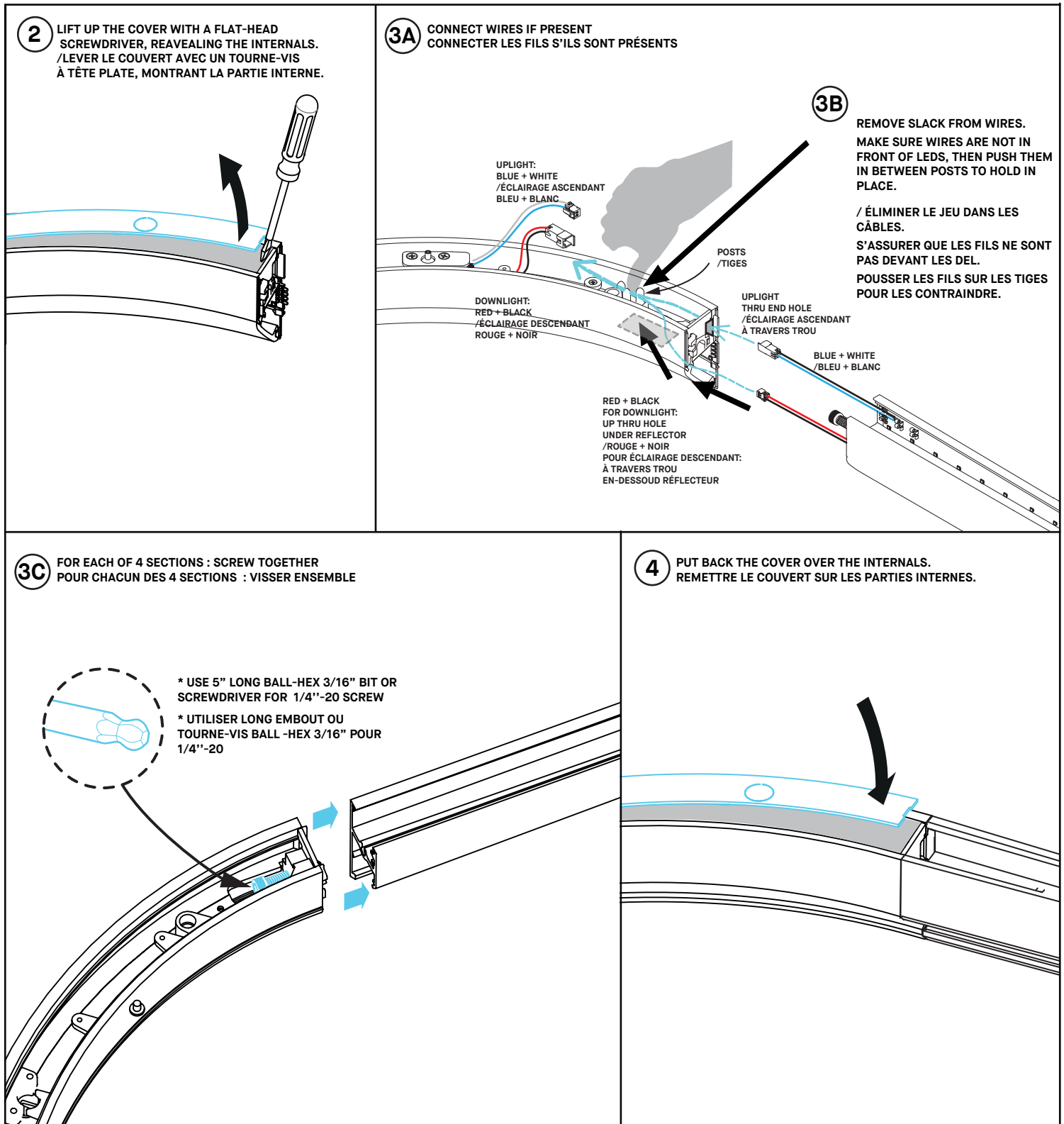
OTHERWISE, THE FIXTURE IS IN FOUR (4) PIECES IN A "J" SHAPE, AND WILL BE REQUIRED TO BE ASSEMBLED. CONTINUE WITH STEP 2.

**INSTALLATION**

1- SELON LA GRANDEUR DE LA FIXTURE, IL EST POSSIBLE QU'ELLE SOIT DÉJÀ ASSEMBLÉE. DANS CE CAS, SAUTER À L'ÉTAPE 6.

SINON, LA FIXTURE EST EN QUATRE (4) MORCEAUX EN FORME DE «J», ET DEVRA ÊTRE ASSEMBLÉE. CONTINUER AVEC L'ÉTAPE 2.

# ATOLL 3852 SURFACE



## INSTALLATION

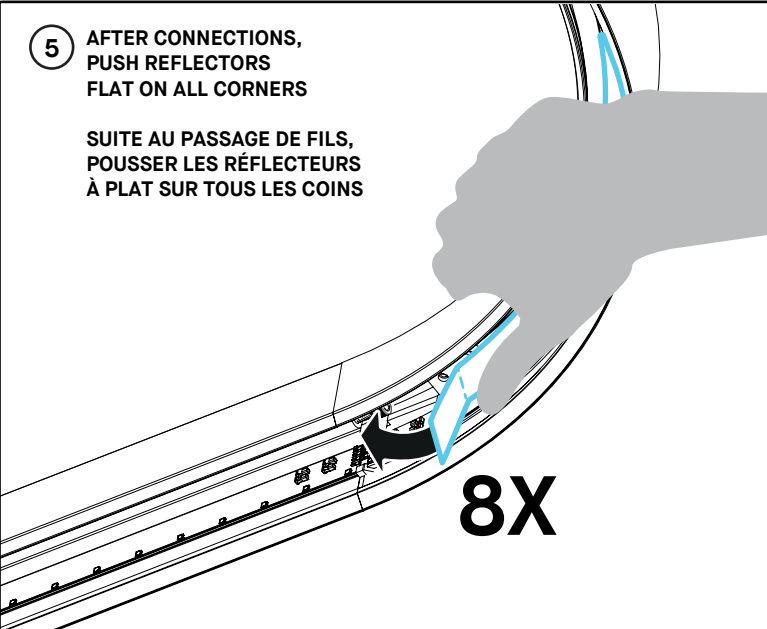
2 TO 4- FOLLOW ON-DRAWING INSTRUCTIONS.

## INSTALLATION

2 À 4- SUIVRE LES INSTRUCTIONS SUR DESSINS.

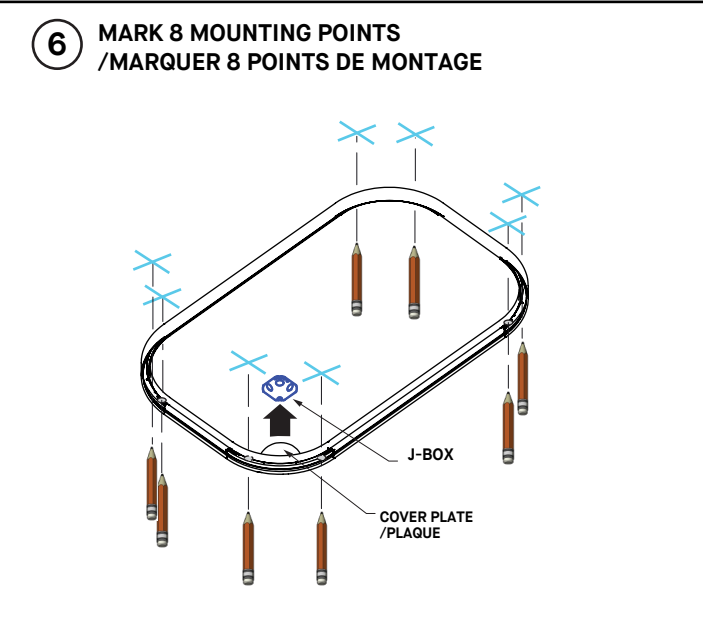
# ATOLL 3852 SURFACE

**5** AFTER CONNECTIONS, PUSH REFLECTORS FLAT ON ALL CORNERS  
**SUITE AU PASSAGE DE FILS, POUSSER LES RÉFLECTEURS À PLAT SUR TOUS LES COINS**

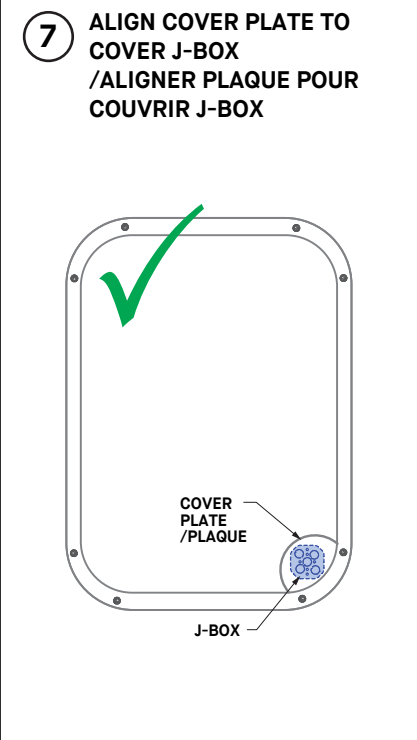


8X

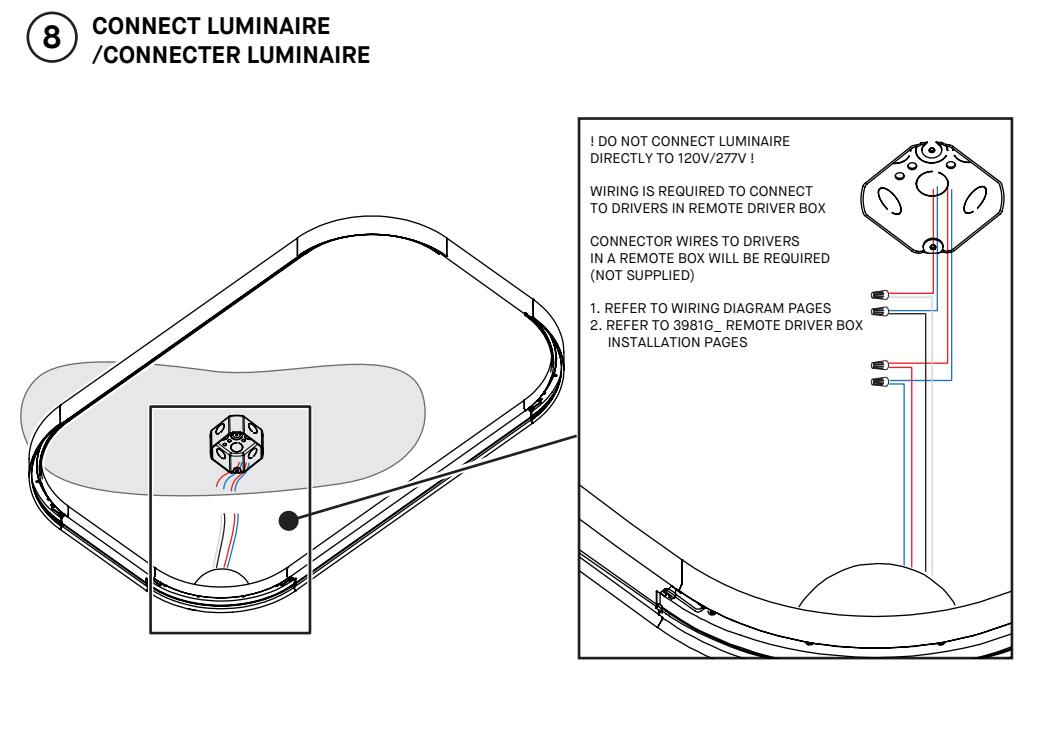
**6** MARK 8 MOUNTING POINTS /MARQUER 8 POINTS DE MONTAGE



**7** ALIGN COVER PLATE TO COVER J-BOX /ALIGNER PLAQUE POUR COUVRIR J-BOX



**8** CONNECT LUMINAIRE /CONNECTER LUMINAIRE



**! DO NOT CONNECT LUMINAIRE DIRECTLY TO 120V/277V !**

WIRING IS REQUIRED TO CONNECT TO DRIVERS IN REMOTE DRIVER BOX

CONNECTOR WIRES TO DRIVERS IN A REMOTE BOX WILL BE REQUIRED (NOT SUPPLIED)

1. REFER TO WIRING DIAGRAM PAGES  
2. REFER TO 3981G\_ REMOTE DRIVER BOX INSTALLATION PAGES

## INSTALLATION

- 5- FIND A REFLECTOR. PUSH IT FLAT. REPEAT ON ALL 8 CORNERS.
- 6- POSITION THE FIXTURE AGAINST THE MOUNTING SURFACE. MARK ALL 8 ANCHOR POINTS.
- 7- ALIGN THE LUMINAIRE WIRES & COVER PLATE SO THAT IS WITHIN A FEW INCHES OF THE JUNCTION BOX.
- 8- MAKE CONNECTIONS TO BUILDING WIRES:  
DO NOT CONNECT LUMINAIRE DIRECTLY TO 120V/277V !  
EXTRA WIRING IS REQUIRED TO CONNECT TO DRIVERS IN REMOTE DRIVER BOX (NOT SUPPLIED)  
1. REFER TO WIRING DIAGRAM PAGES IN THIS INSTALL GUIDE  
2. REFER TO 3981G\_ REMOTE DRIVER BOX INSTALLATION PAGES

## INSTALLATION

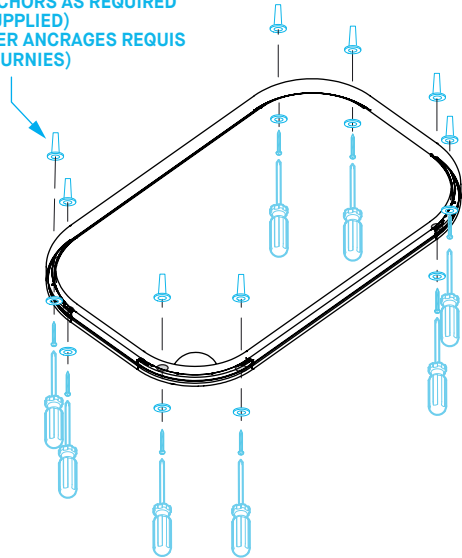
- 5- TROUVER UN RÉFLECTEUR, POUSSER LE À PLAT. RÉPÉTER AUX 8 COINS.
- 6- APPUYER LA FIXTURE SUR LA SURFACE QUI ACCUEILLERA LA FIXTURE. MARQUER LES 8 POINTS D'ANCRAGE.
- 2- ALIGNEZ LA PLAQUE DE COUVERTURE DU LUMINAIRE POUR COUVRIR COMPLÈTEMENT LA BOÎTE DE JONCTION.
- 8- FAIRE CONNECTIONS AU FILS DU BÂTIMENT:  
NE PAS CONNECTER LE LUMINAIRE DIRECTEMENT AU 120V/277V !  
FILAGE SUPPLÉMENTAIRE REQUIS POUR CONNECTER LES DRIVERS AU DRIVER BOX REMOTE (NON FOURNIS)  
1. SE RÉFÉRER AUX PAGES DU DIAGRAMME DE FILS DANS CE GUIDE D'INSTALLATION  
2. SE RÉFÉRER AUX PAGES D'INSTALLATION DU 3981G\_ REMOTE DRIVER BOX

# ATOLL 3852

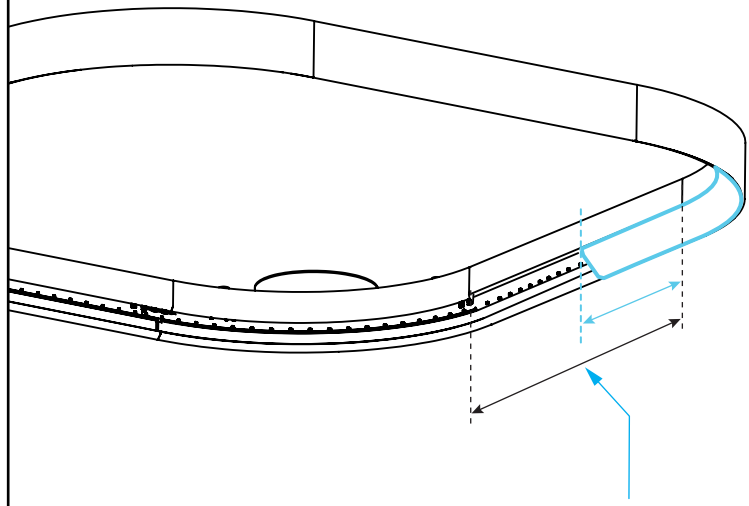
## SURFACE

- 9** INSTALL ANCHORS & SCREWS (NOT SUPPLIED). WASHERS MAY BE NEEDED FOR SCREWHEADS. /INSTALLER ANCRAGES & VIS (PAS FOURNIES). DES RONDELLES POURRAIENT ÊTRE REQUISES SOUS LES TÊTES DE VIS.

ADD ANCHORS AS REQUIRED (NOT SUPPLIED) /AJOUTER ANCRAGES REQUIS (PAS FOURNIES)

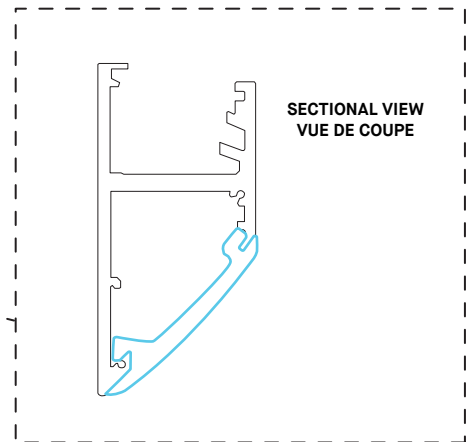
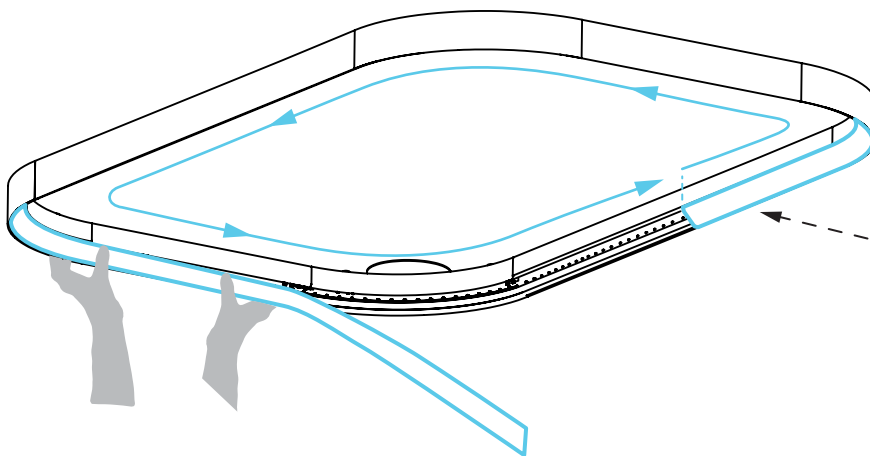


- 10** INSTALLING THE SILICONE DIFFUSER /INSTALLER LE DIFFUSEUR DE SILICONE



FOR AESTHETIC REASONS, START THE DIFFUSER IN THE MIDDLE OF A STRAIGHT SEGMENT /POUR DES RAISONS D'ESTHÉTIQUES, COMMENCER LE DIFFUSEUR AU MILIEU D'UN SEGMENT DROIT.

- 11** INSTALLING THE SILICONE DIFFUSER ALL-AROUND /INSTALLER LE DIFFUSEUR DE SILICONE TOUT LE TOUR



### INSTALLATION

9- FIX FIXTURE ONTO WALL OR CEILING BY DRIVING #8 SCREWS OF 2" INTO ANCHORS. [HARDWARE NOT SUPPLIED]

10- INSERT THE START THE DIFFUSER WITH THE MIDDLE OF A STRAIGHT SEGMENT

11- INSERT THE REST OF THE DIFFUSER IN THE FIXTURE.

!!! BE CAREFUL : DO NOT TOUCH LED IN FIXTURE !!!

### INSTALLATION

9- FIXER LE LUMINAIRE SUR LE MUR OU LE PLAFOND EN INSÉRANT 3 VIS #8 DE 2" DANS LES ANCRAGES. [QUINCAILLERIE NON FOURNIE]

10- INSÉRER LE DÉBUT DU DIFFUSEUR AU MILIEU D'UN SEGMENT DROIT DE LA FIXTURE.

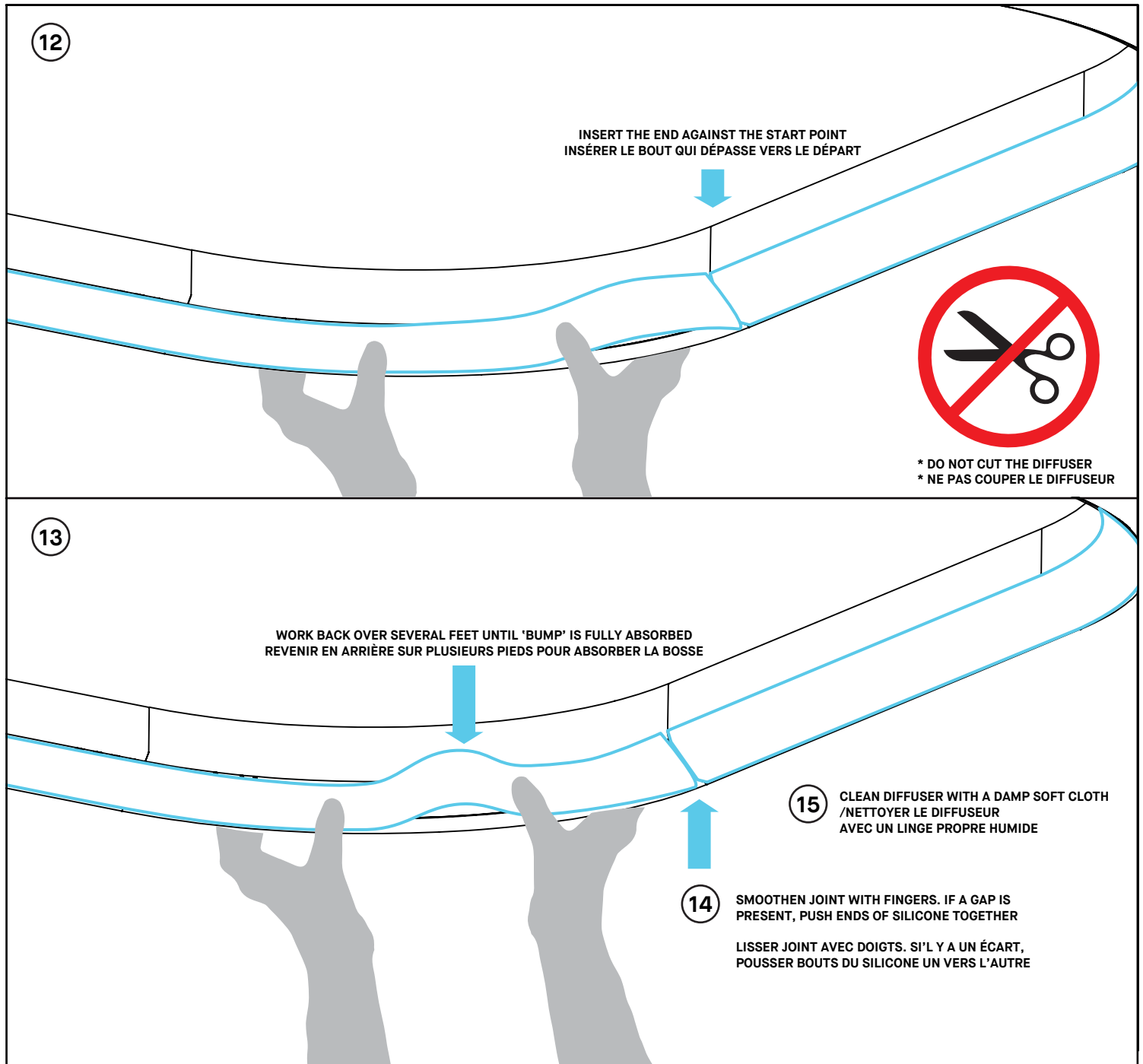
11- INSÉRER LE RESTE DU DIFFUSEUR DANS LA FIXTURE..

!!! FAITES ATTENTION AU DEL DANS LE LUMINAIRE !!!



## INSTALLATION

# ATOLL 3852 SURFACE



## INSTALLATION

- 12- WHEN THERE IS APPROXIMATELY 4 FEET LEFT TO INSTALL, TAKE THE END OF THE LENS, INSERT AND PRESS AGAINST THE OTHER EXTREMITY TO CREATE A CLOSED JOINT.
- 13- GRADUALLY INSERT THE LENS FROM THE JOINT AND **WORK BACK UNTIL ONE OR SEVERAL 'BUMPS' ARE FULLY ABSORBED THROUGH COMPRESSION OF THE LENS MATERIAL. IF NEEDED**, REMOVE MORE OF THE LENS TO ABSORB THE 'BUMP'.
- 14- SMOOTHEN JOINT WITH FINGERS. IF A GAP IS PRESENT, PUSH ENDS OF SILICONE TOGETHER.
- 15- CLEAN DIFFUSER WITH A DAMP SOFT CLOTH.

## INSTALLATION

- 12- LORSQU'IL RESTE ENVIRON 4 PIEDS À INSTALLER, PRENEZ L'EXTRÉMITÉ DE LA LENTILLE ET INSÉRER ET LA PRESSER CONTRE L'AUTRE EXTRÉMITÉ POUR CRÉER UN JOINT FERMÉ.
- 13- INSÉREZ PROGRESSIVEMENT LA LENTILLE À PARTIR DU JOINT ET REVENEZ EN ARRIÈRE JUSQU'À CE QU'UNE OU PLUSIEURS « BOSSES » SOIENT ENTIÈREMENT ABSORBÉES PAR LA COMPRESSION DU MATÉRIAU DE LA LENTILLE. SI NÉCESSAIRE, RETIREZ PLUS DE LONGUEUR DE LA LENTILLE POUR POUVOIR ENSUITE ABSORBER LA « BOSSE ».
- 14- LISSER JOINT AVEC DOIGTS. SI'L Y A UN ÉCART, POUSSER BOUTS DU SILICONE UN VERS L'AUTRE.
- 15- NETTOYER LE DIFFUSEUR AVEC UN LINGE PROPRE HUMIDE.