

MARRO 4228

PROJECT PROJET
SPEC TYPE
NOTES



FELT FINISH FINI FEUTRE



ADDITIONAL PREMIUM COLORS AVAILABLE – SEE ACOUSTIC MATERIAL COLOR OPTIONS PAGE

COLOR MIX MIX COULEUR

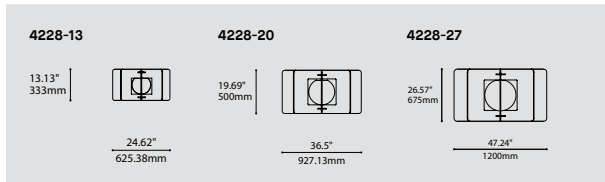
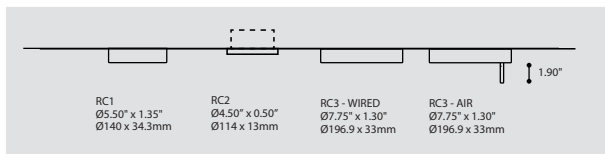


FAMILY FAMILLE



4227U-28

4230



ORDERING SPECIFICATION SPÉCIFICATION DE COMMANDE

MODEL MODÈLE	CODE	
4228-13 SMALL MARRO		
4228-20 MEDIUM MARRO		
4228-27 LARGE MARRO		
LIGHT SOURCE SOURCE LUMINEUSE	LED	
(WATTAGE, LAMP TYPE, OTHER INFO)		
LED	REGULAR OUTPUT	
COLOR TEMPERATURE TEMPÉRATURE DE COULEUR (°K)		
27 2700K		
30 3000K		
35 3500K		
40* 4000K		
* LONGER LEAD TIME MAY APPLY. PLEASE CONTACT YOUR EUREKA REPRESENTATIVE		
COLOR RENDERING INDEX (CRI) INDICE DE RENDU DE COULEUR (IRC)	90	
90 90+ CRI		
VOLTAGE VOLTAGE		
120V 120 VOLT		
277V 277 VOLT		
CONTROL OPTION OPTION DE CONTRÔLE		
DV 0-10V DIMMING (120V-277V)		
DP PHASE DIMMING (120V ONLY)		
NLIGHT2* NLIGHT AIR CONTROL GEN 2		
NLIGHT* NLIGHT WIRED CONTROL		
* REQUIRES RC3 CANOPY		
* FOR EMERGENCY BATTERY WITH NLIGHT OPTIONS, PLEASE CONTACT YOUR EUREKA REPRESENTATIVE. REFER TO NLIGHT GUIDE AND INSTALLATION SHEET FOR ALL REQUIREMENTS.		
EMERGENCY BATTERY BATTERIE D'URGENCE		
EM DRIVER BOX INCLUDED, INSTALLED REMOTELY. SEE EM GUIDE FOR DETAILS.		
EMB ⁽¹⁾ EMERGENCY BATTERY FOR REMOTE BOX		
⁽¹⁾ 3981E ACCESSORY IS REQUIRED FOR THIS OPTION		
CABLE CÂBLE	C	
C CLEAR CABLE, FIELD ADJUSTABLE		
CABLE LENGTH LONGUEUR DE CÂBLE		
60 60" CABLE (STD LENGTH)		
** CUSTOM CABLE LENGTH (PLEASE SPECIFY)		
FOR OVERALL LENGTH, PLEASE CONTACT YOUR EUREKA REPRESENTATIVE		
MOUNTING MONTAGE		
RC1 ROUND CANOPY / PAVILLON ROND		
RC2* SCREWLESS 0.5" CANOPY (2471C)		
RC3 NLIGHT SCREWLESS CANOPY Ø7.75" x 1.30" (2474H)		
* 3983 ACCESSORY PROVIDED		
CANOPY FINISH FINI PAVILLON		
BLKE BLKE FINE TEXTURE		
WHE WHITE FINE TEXTURE		
RAL* PLEASE SPECIFY RAL CODE		
* LONGER LEAD TIME MAY APPLY, PLEASE CONTACT YOUR EUREKA REPRESENTATIVE		
POWER CORD FINISH FINI CÂBLE D'ALIMENTATION	CLR	
CLR CLEAR VINYL CABLE		
MAIN PANELS FELT FINISH PANNEAUX PRINCIPAUX FINI FEUTRE		
ABF AZURE BLUE FELT	BYF BANANA YELLOW FELT	REF RED FELT
AWF ARCTIC WHITE FELT	CHF CHARCOAL FELT	SGF SILVER GRAY FELT
BBF BASIC BLACK FELT	NBF NAVY BLUE FELT	TGF TITANIUM GRAY FELT
BOF BLOOD ORANGE FELT	OBF OCEAN BLUE FELT	ZFF ZINFANDEL FELT
BTF BATTLESHIP GRAY FELT	PGF PEAR GREEN FELT	
PREMIUM* PLEASE SPECIFY PREMIUM COLOR CODE – SEE ACOUSTIC MATERIAL COLOR OPTIONS PAGE		
* LONGER LEAD TIME MAY APPLY, PLEASE CONTACT YOUR EUREKA REPRESENTATIVE		
BLADES FELT FINISH AILES FINI FEUTRE		
ABF AZURE BLUE FELT	BYF BANANA YELLOW FELT	REF RED FELT
AWF ARCTIC WHITE FELT	CHF CHARCOAL FELT	SGF SILVER GRAY FELT
BBF BASIC BLACK FELT	NBF NAVY BLUE FELT	TGF TITANIUM GRAY FELT
BOF BLOOD ORANGE FELT	OBF OCEAN BLUE FELT	ZFF ZINFANDEL FELT
BTF BATTLESHIP GRAY FELT	PGF PEAR GREEN FELT	
PREMIUM* PLEASE SPECIFY PREMIUM COLOR CODE – SEE ACOUSTIC MATERIAL COLOR OPTIONS PAGE		
* LONGER LEAD TIME MAY APPLY, PLEASE CONTACT YOUR EUREKA REPRESENTATIVE		
ACCESSORY ACCESSOIRE		
ALL ACCESSORIES ARE AVAILABLE FOR ADVANCE SHIPPING		
3983 DEEP JUNCTION BOX (PROVIDED)		
EMERGENCY BATTERY ACCESSORY ACCESSOIRE BATTERIE D'URGENCE		
3981EA ELECTRICAL BOX FOR EMB EMERGENCY BATTERY		

PRODUCT CHARACTERISTICS CARACTÉRISTIQUES DU PRODUIT



SPECIFICATION

Acoustic Material Color Options for Marro

Standard colors



ABF
Azure Blue



AWF
Arctic White



BBF
Basic Black



BOF
Blood Orange



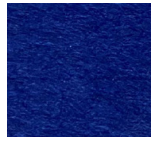
BTF
Battleship Gray



BYF
Banana Yellow



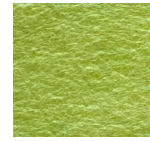
CHF
Charcoal



NBF
Navy Blue



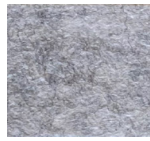
OBF
Ocean Blue



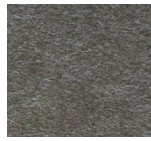
PGF
Pear Green



REF
Red



SGF
Silver Gray



TGF
Titanium Gray



ZFF
Zinfandel

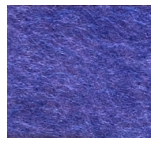
Premium colors



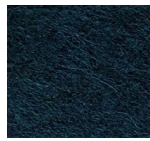
BGF
Bubble Gum



BKF
Bark Brown



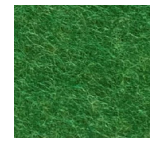
DBF
Denim Blue



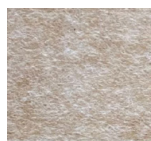
DTF
Deep Teal Green



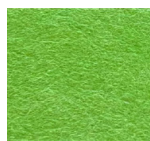
DYF
Daisy Yellow



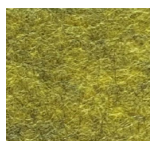
GGF
Grass Green



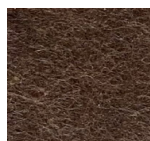
LBF
Light Beige



LGF
Lime Green



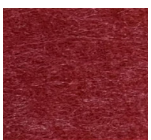
MGF
Moss Green



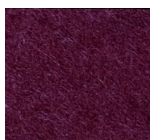
OAF
Oak Brown



PBF
Peanut Brown



PNF
Pinot Noir



PPF
Plum Purple



SBF
Sky Blue



TOF
Tangerine Orange



TPF
Tulip Purple

— Premium colors carry extended lead times. Additional fees may apply for expedited lead times. Please consult factory.
— Due to the dye process, colors may vary slightly from batch to batch.

MARRO 4228

SEAMLESS INSTALLATION

Marro is suspended on an aircraft cable and powered with a clear power cable and is available with a standard 1,35in or a slim 0,5in magnetic canopy. Marro unlit is hung on an aircraft cable without canopy. 4228-13 is hung with power cable exclusively

MAIN PANELS

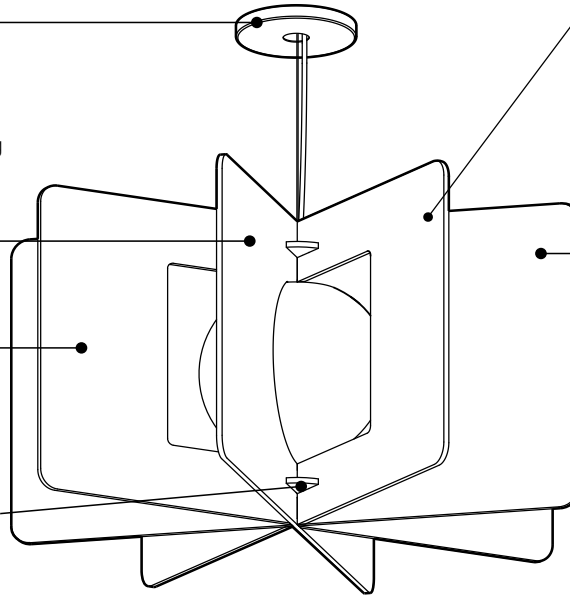
The main panels fulfill a strong geometric aspect

BLADES

The cut-open blades finish the bold look and keeps everything breathy. Blades can be a different felt color from the main panels. Unlit version has full blades.

BRACKETS

The brackets holds the blades in place and will always be the same color as the main panels



BIG FAMILY

Marro is available in 3 sizes, allowing a lot of configurations. Also available as an unlighted pendant (Marro Unlit 4228U)

SOUND ABSORBING SHADE

The shade is composed of interlocked sound absorbing panels that increases acoustic comfort.

ECOLOGICAL

Custom CNC cut polyester felt panels made from recycled bottles (PET). Panels are also recyclable.



MIXED FELT COLOR POSSIBILITY

It is possible to create a combination of 2 felt colors from our selection of Standard and Premium felt colors

COLORS

Available in 14 standard colors and 16 Premium colors. For all color options, refer to the Acoustic Material Color Options page.

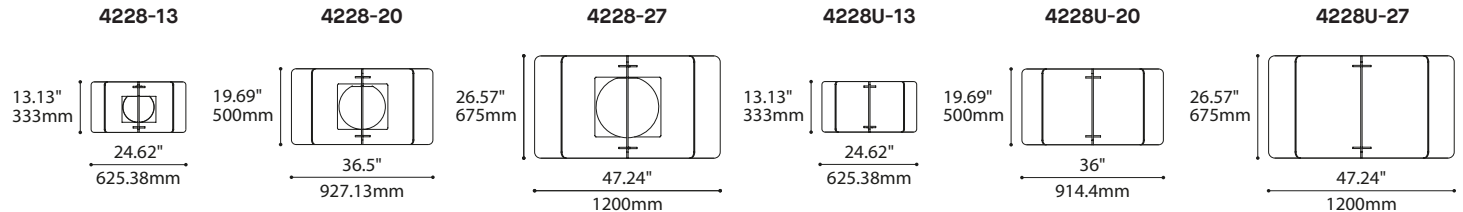
CLEANING

A proper and regular cleaning will help extend the lifespan of acoustic products. Remove dust with a vacuum cleaner and light stains with a damp cloth. For greasy and deep stains, a professional dry clean is recommended. Do not use any abrasive, soap, or chemical cleaner.



NOISE REDUCTION FIXTURES

Lighted versions (Marro 4228) or the versions without light source (Marro Unlit 4228U) can be used alone or combined to create impressive layouts, while multiplying the sound absorption.

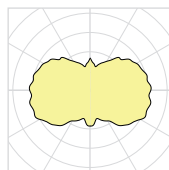


PRODUCT SPECIFICATION	4228-13	4228-20	4228-27	4228U-13	4228U-20	4228U-27
PERFORMANCE						
SYSTEM WATTAGE	9.8 W	9.8 W	14.1 W	N/A	N/A	N/A
DELIVERED LUMENS (4000K)	657 LM	724 LM	1100 LM			
EFFICACY	69.8 LM/W	73.8 LM/W	72.3 LM/W			
OTHER INFORMATION						
WEIGHT	4.78 LBS / 2.2 KG	7.60 LBS / 3.4 KG	12.93 LBS / 5.9 KG	3.59 LBS / 1.6 KG	5.73 LBS / 2.6 KG	10.14 LBS / 4.6 KG
L70 (LUMEN MAINTENANCE)	> 55 000 HRS	> 55 000 HRS	> 55 000 HRS	N/A	N/A	N/A
FELT	HIGH DENSITY 9MM POLYESTER FELT					
ACOUSTIC	ACOUSTIC MATERIAL RATED AT 0.75 N					
FIRE RATING	ASTM E84-13 (FELT MATERIAL ONLY)					
MAX. LUMINANCE 45°-90° OF NADIR	344 CD/M2	165 CD/M2	132 CD/M2	N/A	N/A	N/A

EFFICACY MULTIPLIERS

CRI	CCT	FACTOR
90+	4000K	1.00
90+	3500K	0.97
90+	3000K	0.94
90+	2700K	0.91

LIGHT DISTRIBUTION



4228-XX



Visit our website for warranty terms and conditions.



TECHNICAL DATA

INSTALLATION SANS QUINCAILLERIE VISIBLE

Marro est suspendu sur câble d'acier ainsi qu'un câble électrique clair sur un pavillon magnétique standard de 1,35po ou mince de 0,5po. Marro Unlit est suspendu par câble d'acier sans pavillon. 4228-13 est suspendu par câble électrique seulement.

PANNEAUX PRINCIPAUX

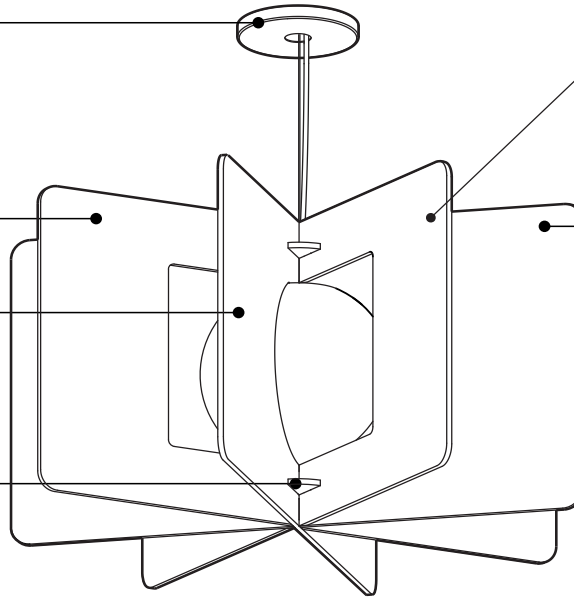
Les panneaux principaux renforcent la géométrie.

AILETTES

Les ailes ajouré viennent alléger et permettre au look de respirer. Les ailettes peuvent être d'une couleur différente des panneaux principaux. La version sans source lumineuse à des ailettes pleines.

BRACKETS

Les brackets tiennent les ailettes en place et sont de la couleur des panneaux principaux



FAMILLE DE PRODUIT

Marro est disponible en 3 formats, permettant un lot de configurations. Également disponible en suspension non éclairé (Marro Unlit 4228U)

ABAT-JOUR INSONORISANT

L'abat-jour du luminaire est composé de deux panneaux insonorisant entrecroisés qui augmentent le confort acoustique.

ÉCOLOGIQUE

Panneaux de polyester faits de bouteilles de plastique recyclées (PET) et coupés sur mesure. Les panneaux sont recyclables.



MIX DE COULEURS POSSIBLES

Il est possible de créer des combinaisons de 2 couleurs à travers notre sélection de feutres couleurs Standard ainsi que nos couleurs Premium

COULEURS

Disponible en 14 couleurs standards et 16 couleurs Premium. Pour toute les options, consultez la Fiche de Spécification

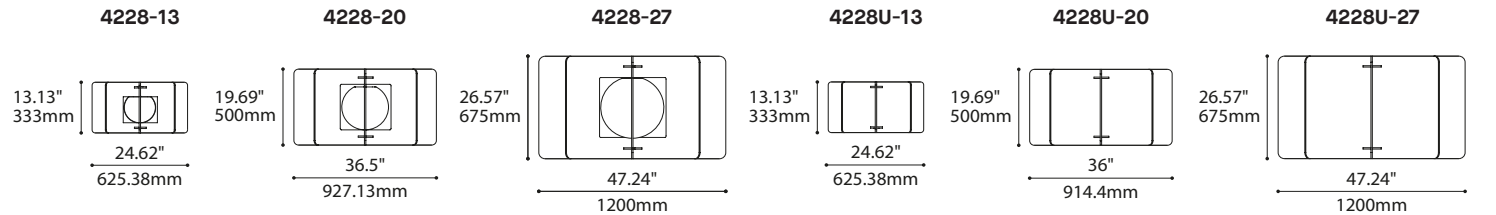
NETTOYAGE

Un nettoyage approprié et régulier contribuera à prolonger la durée de vie des produits acoustiques. Enlever la poussière avec un aspirateur et les taches légères avec un linge humide. Pour les tâches importantes ou graisseuses, un nettoyage à sec est recommandé. Ne pas utiliser de produits abrasifs, de savon ou de produits nettoyants chimiques.



ATTÉNUATION DU BRUIT

Les versions éclairées (Marro 4228) ou sans source lumineuse (Marro Unlit 4228U) peuvent s'utiliser seules ou être disposés de façon à créer d'impressionnant agencement, multipliant ainsi l'absorption du bruit ambiant.

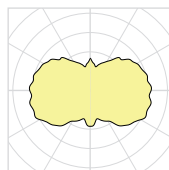


SPÉCIFICATION PRODUIT	4228-13	4228-20	4228-27	4228U-13	4228U-20	4228U-27
PERFORMANCE						
PUISSANCE TOTALE	9.8 W	9.8 W	14.1 W	N/A	N/A	N/A
LUMENS RÉELS (4000K)	657 LM	724 LM	1100 LM			
EFFICACITÉ	69.8 LM/W	73.8 LM/W	72.3 LM/W			
AUTRES INFORMATIONS						
POIDS	4.78 LBS / 2.2 KG	7.60 LBS / 3.4 KG	12.93 LBS / 5.9 KG	3.59 LBS / 1.6 KG	5.73 LBS / 2.6 KG	10.14 LBS / 4.6 KG
L70 (MAINTENANCE DE LA LUMIÈRE)	> 55 000 H	> 55 000 H	> 55 000 H	N/A	N/A	N/A
FEUTRE	FEUTRE DE POLYESTER HAUTE DENSITÉ 9MM					
ACOUSTIQUE	MATÉRIEL ACOUSTIQUE GRADÉ À 0.75 N					
RÉSISTANCE AU FEU	ASTM E84-13 (MATÉRIEL FEUTRE SEULEMENT)					
MAX. LUMINANCE 45°-90° OF NADIR	344 CD/M2	165 CD/M2	132 CD/M2	N/A	N/A	N/A

FACTEUR D'EFFICACITÉ

CRI	CCT	FACTOR
90+	4000K	1.00
90+	3500K	0.97
90+	3000K	0.94
90+	2700K	0.91

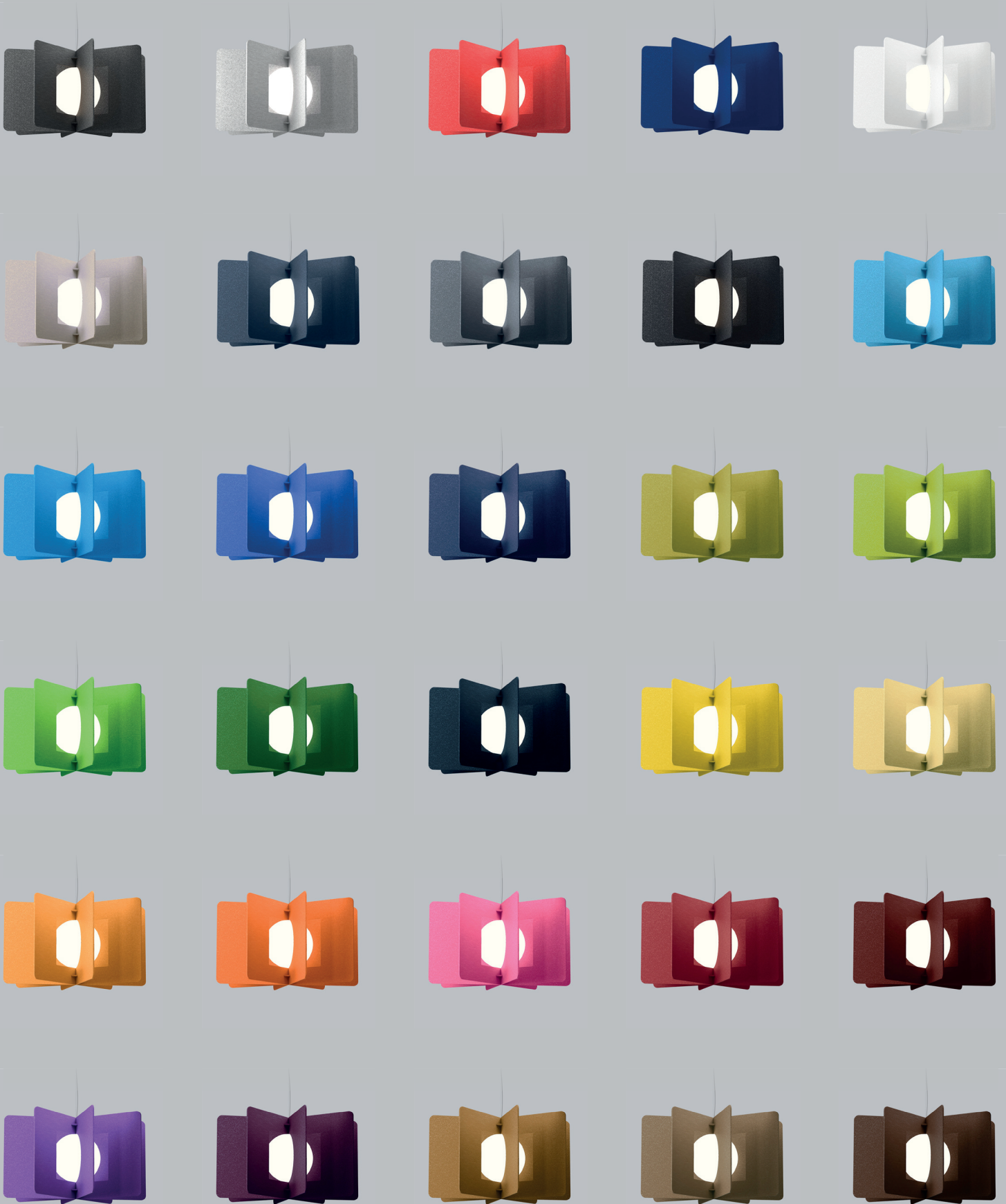
DISTRIBUTION LUMINEUSE



4228-XX



Visitez notre site Web pour les termes et conditions.



Acoustic test results

The acoustic testing of our fixtures enables us to get data such as the average Sabins per object and the sound absorbing coefficient (Sabins/ft²). One Sabins is the equivalent of 1ft² of perfect sound absorption.

For the Marro, Elke and Joli, we tested two size of the fixture; the Marro 27" and the 13".

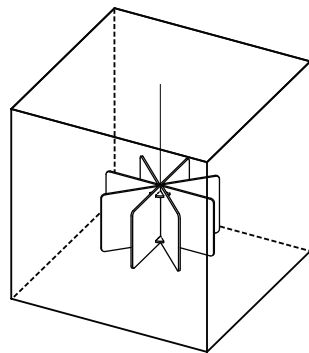
These were tested 36" from the test surface (ceiling).

2x Marro 27" in a single row, objects spaced 70" on center.

6x Marro 13" in two rows of three objects each, rows spaced 50" on center, objects in each row spaced 45" on center.

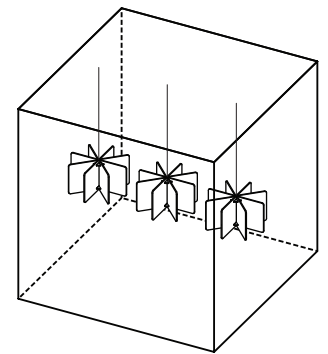
Marro unlit 27" test

250Hz - 13.29 Sabins
 500Hz - 16.75 Sabins
 1000Hz - 21.63 Sabins
 2000Hz - 27.34 Sabins
 Average per fixture:
19.75 Sabins

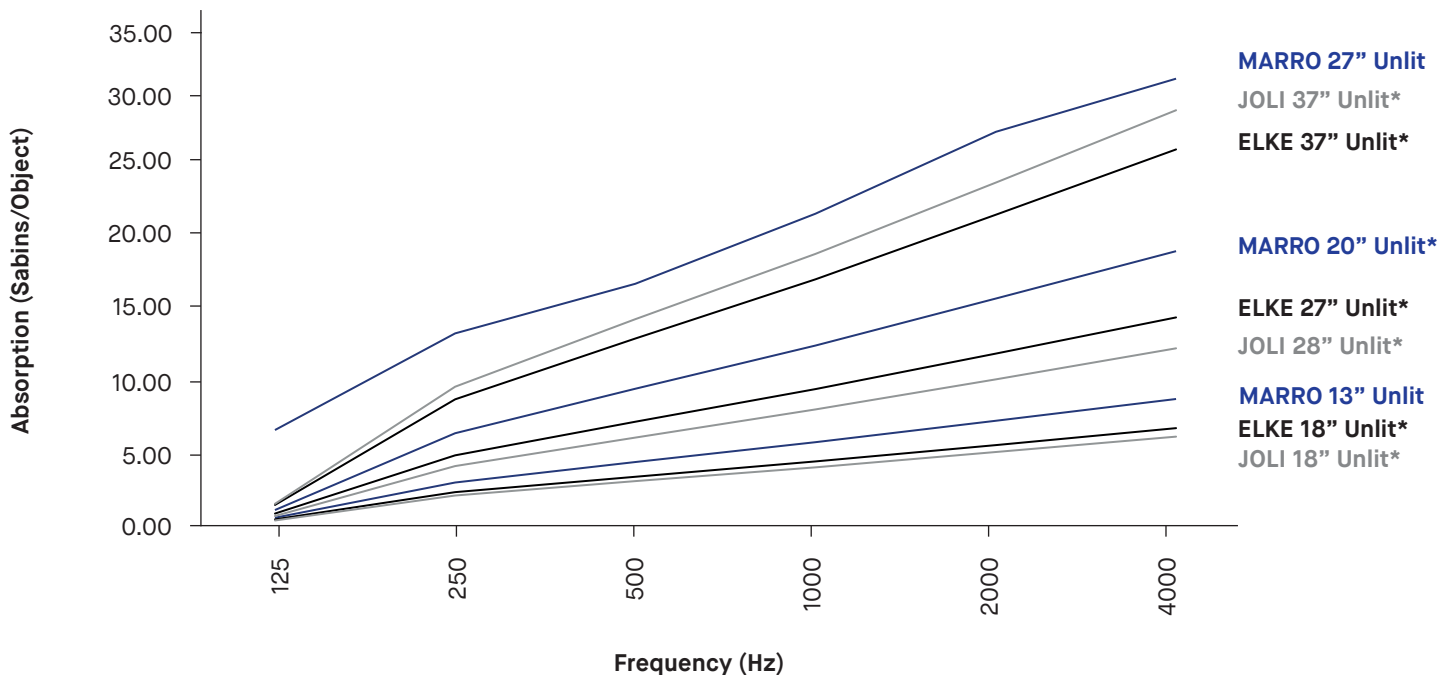


Marro unlit 13" test

250Hz - 2.91 Sabins
 500Hz - 4.33 Sabins
 1000Hz - 5.71 Sabins
 2000Hz - 7.21 Sabins
 Average per fixture:
5.04 Sabins



Sound Absorption

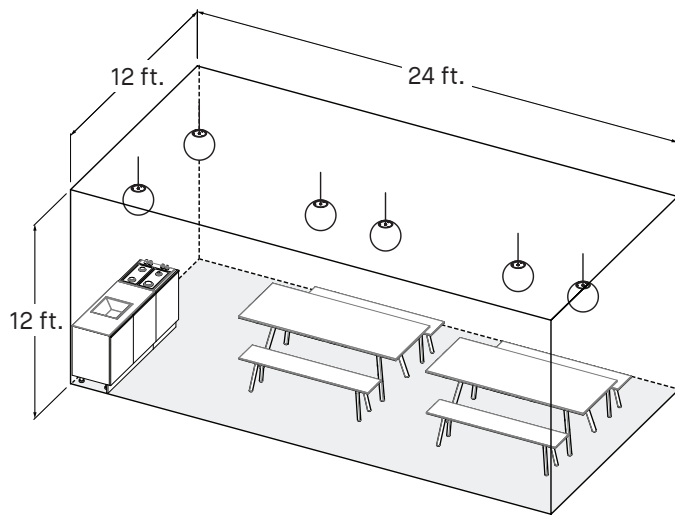


*Extrapolated data

**Data for Lit configuration, calculate a loss of 17% from the unlit version.

Reverberation time

Based on the test data, we are able to calculate the reverberation time of fixture layouts in a closed room and determine the extra amount (ft²) of sound absorbing material that would be required for a comfortable level. Reverberation time is the calculation of the time it takes for sound to fade by 60 dB in a closed space in seconds. As a reference, the WELL standard recommends a reverberation time of 0.5 seconds for an open space application and 0.6 seconds for a conference room. Here are two acoustic scenarios using the Marro acoustic pendant in a lunch & breakroom

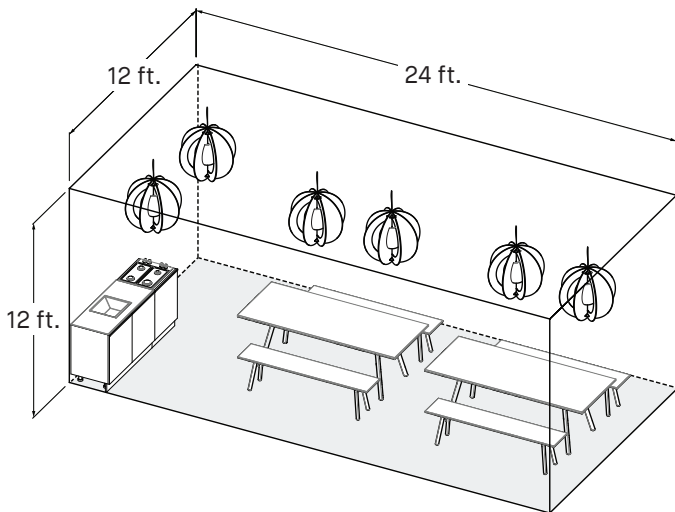


Scenario 1

6x MIKA 18''
hanging 12'' from the ceiling.

**Average workplane illuminance
for a lunch & breakroom**
14 fc

Reverberation time
1.191 seconds





Scenario 2

6x JOLI 37''
hanging 12'' from the ceiling.

**Average workplane illuminance
for a lunch & breakroom**
14 fc

Reverberation time
0.804 seconds
+48% better acoustics

 Carpet on
concrete floor

 1/2'' sheetrock
walls and ceiling

SEE THE ACOUSTIC DATA DOCUMENTS
ON OUR WEBSITE FOR MORE
INFORMATION.